

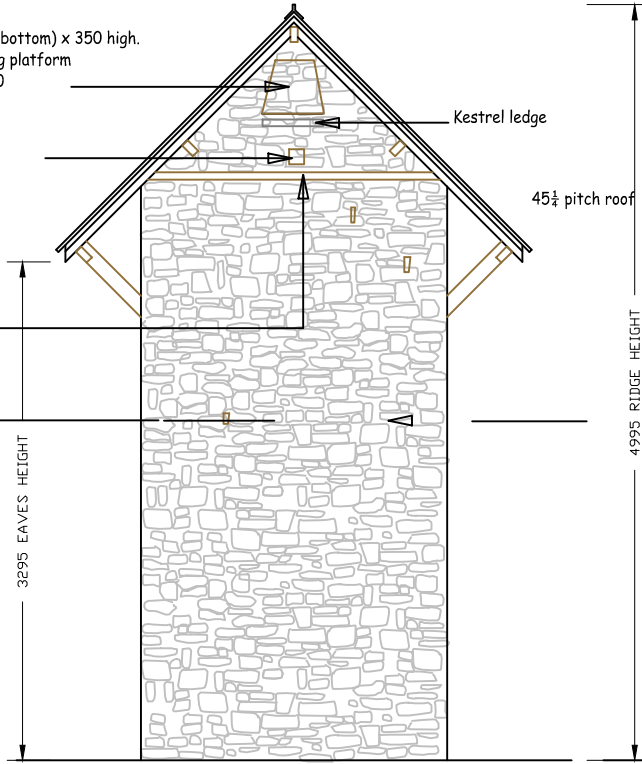
KESTREL access hole
250 wide (top) x 400 wide (bottom) x 350 high.
with timber or stone landing platform
below size = 400 wide x 350
projecting x 50 thickness

LITTLE OWL access hole
100 x 100

LITTLE OWL perch

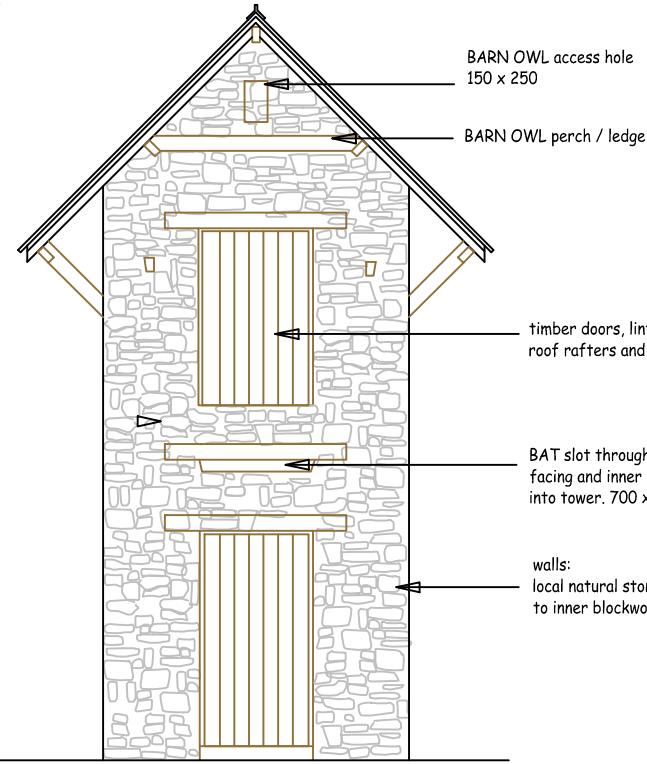
first floor level

(note: first floor
construction =
concrete beam +
block)

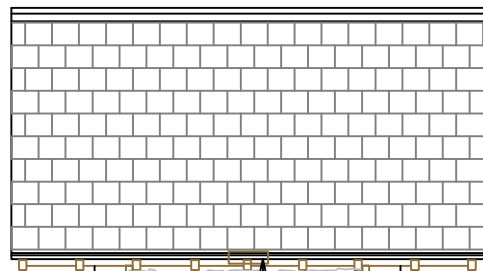


WEST FACING ELEVATION

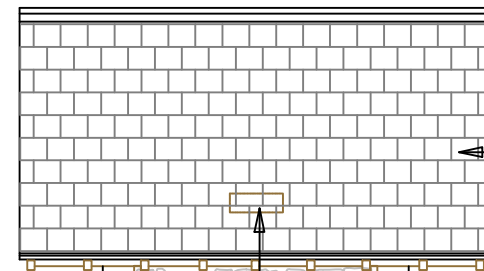
ALL DIMENSIONS IN MILLIMETRES



EAST FACING ELEVATION



SOUTH FACING ELEVATION



NORTH FACING ELEVATION

Install lots of cavities of different
sizes in depth of stone facing for
INVERTEBRATES, NESTING BIRDS
etc. to all wall faces, but particularly
to the South face

install BAT slots through
stone facing and inner
blockwork (not roof) into
tower = 150 x 350.
higher on North face,
lower on South face, as
indicated

BARN OWL access hole
150 x 250

BARN OWL perch / ledge

timber doors, lintels,
roof rafters and purlins.

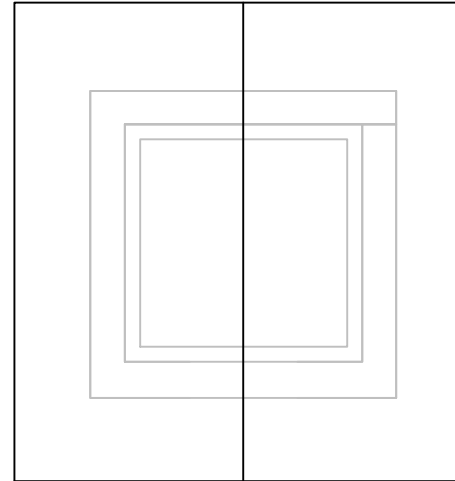
BAT slot through stone
facing and inner blockwork
into tower. 700 x 100

walls:
local natural stone facing
to inner blockwork

roof:
natural slate.

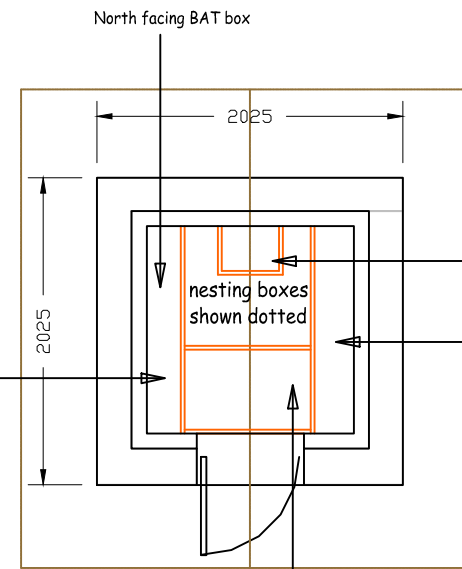
Timber brackets to be fixed
to the inner blockwork in order
to stabilise the roof overhang

walls:
local natural stone facing
to inner blockwork



ROOF PLAN

NOTE
generous roof overhang at each
gable end provides required shelter
for safe fledging of young birds

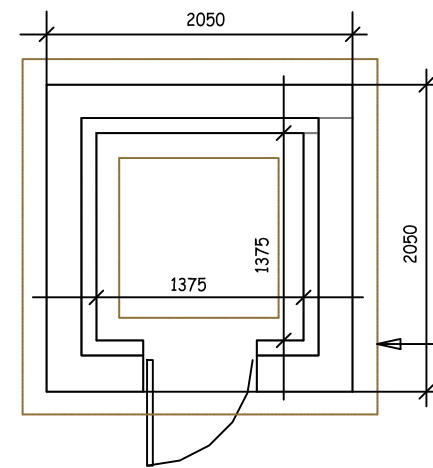


FIRST FLOOR LEVEL

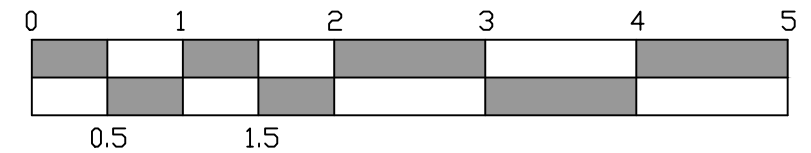
LITTLE OWL nestbox under
KESTREL nestbox

South facing BAT box

BARN OWL nestbox. Note
floor of nestbox must be
minimum 500 below access hole



GROUND FLOOR LEVEL



PROJECT: UNITED UTILITIES LAND AGENT WORK		UNITED UTILITIES PLC PROPERTY SERVICES CLEARWATER 2 LINGLEY MERE
TITLE: PROPOSED WILDLIFE TOWER		
SCALE: 1:50@A3	DATE: AUG 2022	
DRAWN BY: N460254		
DRAWING No: 01		